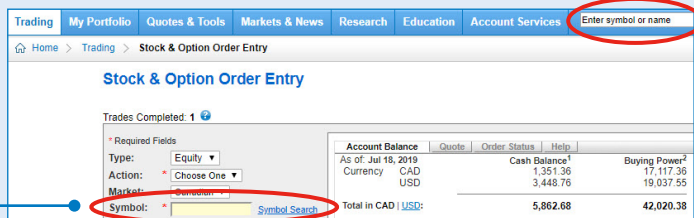


Making your first trade

Before placing a trade, it's important to know the symbol of the company and the market you want to place the trade on. The same symbol could be used in the Canadian market and the American market, but the company could be different.

Use **Symbol lookup** to verify the name of the company and the market.



If you're unsure of the symbol for the company you're looking to trade, use the search field in the top right corner to find the company symbol.

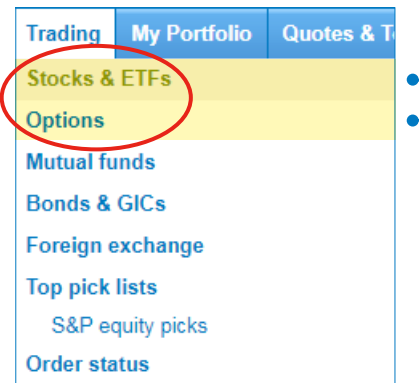


Let's Connect

If you have questions call **1-888-776-6886**.

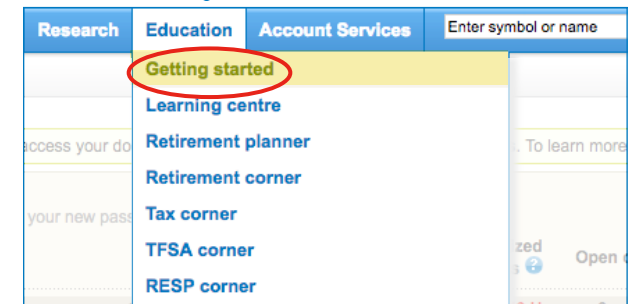
How to place a trade through BMO InvestorLine

1. Sign in to [BMO InvestorLine](#).
2. Hover over **Trading** and select either **Stocks & ETFs** or **Options**.

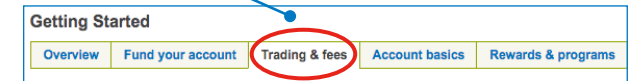


For more information on how to place a trade, watch the trading tutorial

1. Hover over **Education** and click **Getting Started**.



2. Select the **Trading & fees** tab.



3. Launch the trading tutorial from the sidebar on the right.

